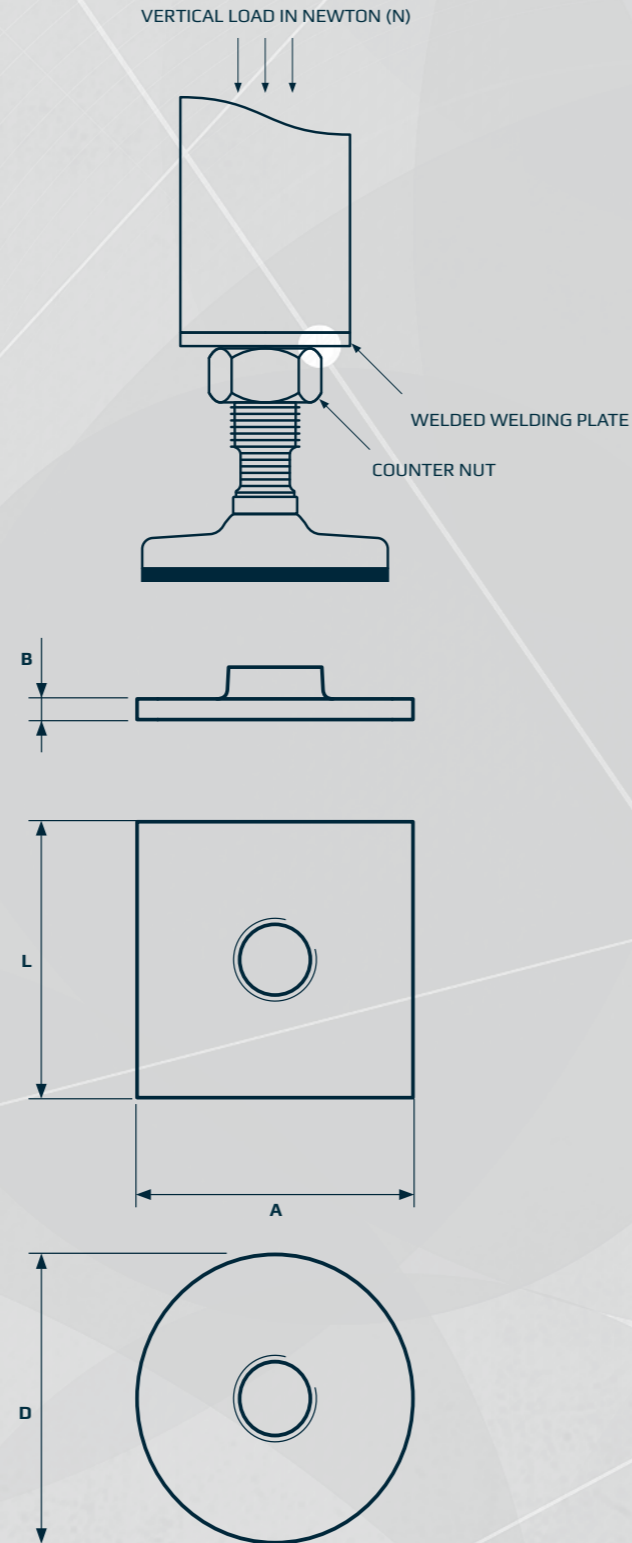


# ACCESSORIES WELDING PLATES

The welding plates provide complete sealing of the tube after welding.  
The welding plates are available for rectangular and round tubes.

- Stainless steel AISI 304/A2, 1.4301
- Squared welding plates
- Round welding plates
- All dimensions available



# ACCESSORIES WELDING PLATES

PRODUCT CODE TYPE - THREAD - PLATE  
EXAMPLE WPS - 38 - 2 X 2

## SQUARE



THREAD [UNC]	3/8	1/2	5/8	3/4	1
PLATE SIZE L x A [in]	[N]	[N]	[N]	[N]	[N]
1,5 x 1,5	2.500	3.100	5.600	10.500	-
2 x 2	1.800	2.400	6.000	8.500	11.500
3 x 3	-	-	3.600	6.400	9.000
4 x 4	-	-	3.000	4.200	7.200
THICKNESS B [in]	0,11		0,15		

## RECTANGLE



THREAD [UNC]	3/8	1/2	5/8	3/4	1
PLATE SIZE L x A [in]	[N]	[N]	[N]	[N]	[N]
4 x 2	-	-	3.800	6.800	7.900
THICKNESS B [in]	0,11		0,15		

## ROUND



THREAD [UNC]	3/8	1/2	5/8	3/4	1
PLATE SIZE L x A [in]	[N]	[N]	[N]	[N]	[N]
1,29	3.600	4.650	-	-	-
1,49	3.200	3.800	6.500	10.600	-
1,57	3.100	3.600	5.500	10.000	-
1,69	3.000	3.400	4.800	8.500	-
1,96	2.300	2.900	6.800	10.500	14.000
2,36	-	-	5.800	7.000	10.000
THICKNESS B [in]	0,11		0,15		



Values are based on 3D-Cad-Cosmos calculation, combined with practical test samples.  
Applied safety factor: 1,5