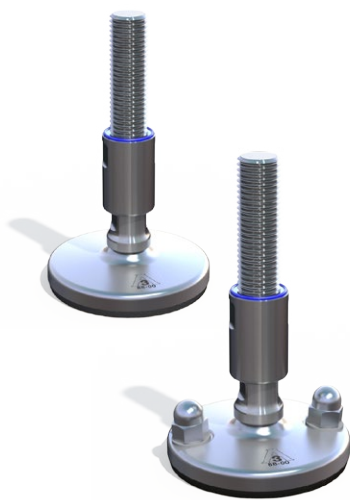


CLEANING AND MAINTENANCE



CLEANING AND MAINTENANCE GUIDANCE FOR NGI'S HYGIENIC MACHINE FOOT XHJ & XHG

The XHJ & XHG machine feet is certified according to the 3A hygienic standard: "88- 00" and certified according to the EHEDG hygienic standard TYPE EL - CLASS 1.

The patented machine feet seal all moveable parts 100 % hygienically, even if the load on the feets is removed. This System is approved for machines and equipment for the dairy-, brewery and phamaceutical industry, applications with the highest demands for hygiene and cleaning. The design of the machine feets reduces the cleaning effort to an absolute minimum.



IMPROVED
HYGIENICS



REDUCED
CLEANING TIME



MINIMIZED
WATER USAGE

CLEANING:

1. Rinse with water, (max. temp. ~40°C on proteins).
2. Distribute and cover all surfaces with foaming alkaline detergent for minimum 10 min. All usual products within the industry can be used. Follow suppliers recommendations for temperature and concentration (max. 100°C & concentration depending on foaming product).
3. Rinse with hot water (max. 100°C) with low-medium pressure (approx. 8-12 bar) until visible cleanability is obtained. Cleaning of the foot assembly including sealings and domed nuts can normally be done with a spraying nozzle pointing in a downwards direction approx. 45° from above. For more heavy polluted surfaces, a more direct oriented nozzle can be necessary.
NB. Be careful not to damage sealings if high pressure cleaning is used. Keep nozzle at min. 200-300 mm distance.
4. If mechanical cleaning is necessary because of severe dirt, cleaning must be executed by a soft brush or soft plastic scraper together with a more direct pointing nozzle spray.
NB. Steel scraper, steel brush or other sharp metallic tools are strictly prohibited, since rubber sealings can be severe damaged and the steel surfaces will be scratched.

MAINTENANCE:

1. If the sealings on the sleeve are damaged they must be replaced. Always use original spare parts from NGI.
2. If the sealing on the lower portion of the spindle is damaged, replace the foot assembly and install a new foot assembly. The spindle and foot cannot be separated.
3. For foot assemblies with floor fixing always make sure that the floor fixing nut is tightened as specified in the installation manual. Retighten if necessary. If replacement of nuts or washers is necessary, always use original spare parts from NGI.
4. If any adjustments are nesasary the foot assembly and the nearest surroundings must be cleaned carefully to prevent any dirt to enter the foot assembly.